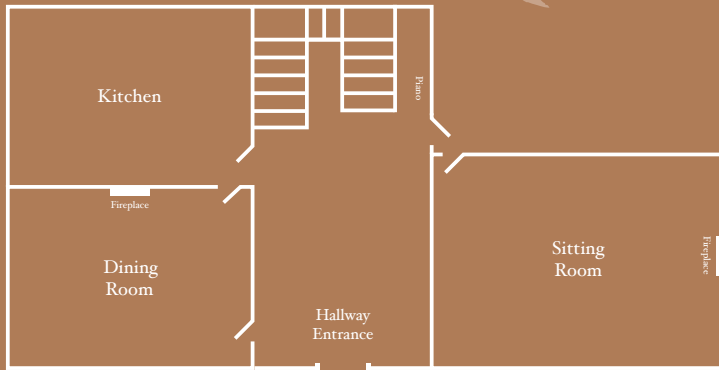


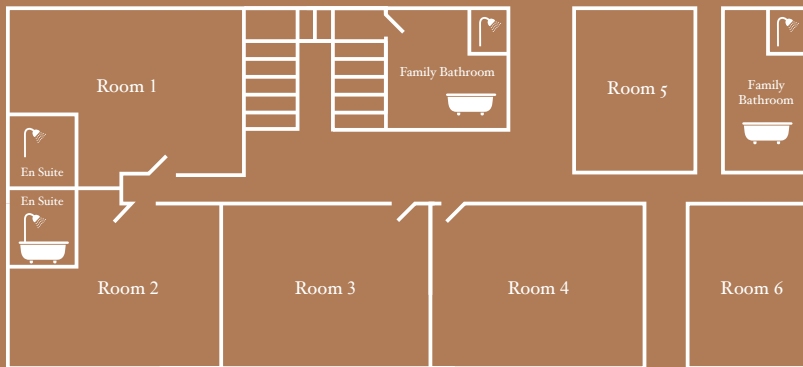
Floorplan

Wilde Lodge - Ground Floor

↑
View to safari tent



Wilde Lodge - Upper Floor

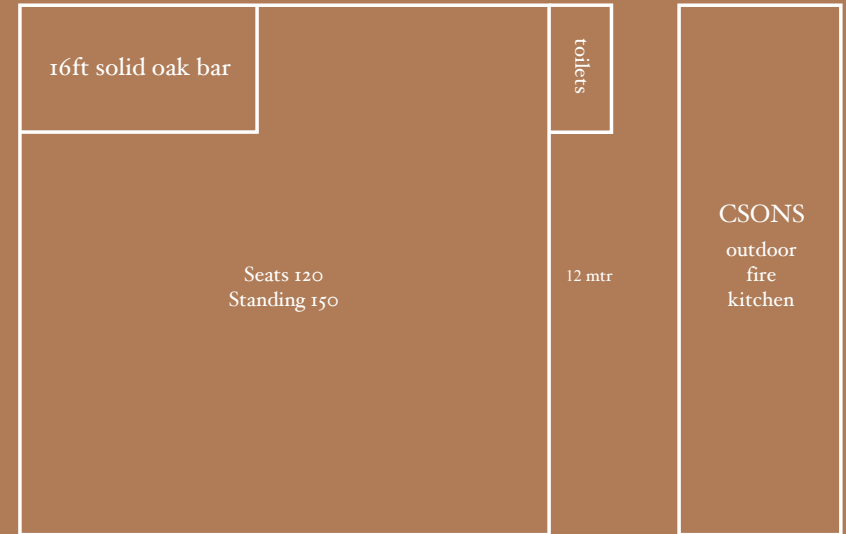


↓
View to lawn & front gardens

- Room 1 - (en suite) can be either a super king or 2 singles
- Room 2 - (en suite) can be either a super king or 2 singles
- Room 3 - (shared family bathroom) can be either a super king or 2 singles
- Room 4 - (shared family bathroom) can be either a super king & a single, or 4 singles
- Room 5 - (shared family bathroom) can either be a super king or 2 singles
- Room 6 - (shared family bathroom) can either be a super king or 2 singles

Safari Tent

12 mtr



Long Barn

18 mtr

